



# LX-Series

Completely New Gear Unit Range!

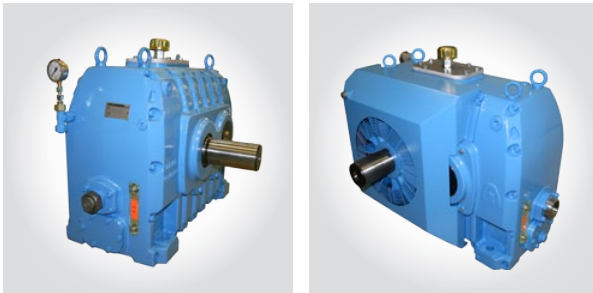


# LX-Series

# LX-Series

## Completely New Gear Unit Range!

The range includes 16 gear unit sizes which are optimally divided to meet required torque ranges and ratio requirements.



*A new design has been applied to the LX-series. Now, the shape of the gear housing allows air to flow underneath.*

### The LX-series can be equipped with:

- Mechanical fan cooler with air-deflecting cover
- Water cooling coil
- Heating element
- Shaft end pump
- Remote condition monitoring: Kumera Guard Gear 200.

### LX-series is perfect choice for:

#### INDUSTRIES:

- Pulp and Paper
- Material handling
- Mining and mineral

#### APPLICATIONS:

- Paper machine drives
- Pulper drives
- Vacuum pump drives
- Refiner drives
- Roll drives

The LX-gearbox series is specifically designed for fast rotating shafts such as roll-applications.

Integrated lubrication canals and gear wheels manufactured with high accuracy have resulted in compact dimensions with a high torque range from 1 to 400 kNm.

Service-free labyrinth seals are integrated into the gearbox housing. Labyrinth seals cause neither wear nor friction on the rotating shaft.

The gearbox can be easily connected to a central lubrication system or gearboxes can be delivered with a separate lubrication unit.

Selection table for Helical Gear Units

Size	1100	1135	1180	1225	1270	1315	1355	1390	1420	1450	1475	1500	1530	1560	1600	1630
	T2	T2	T2	T2	T2	T2	T2	T2	T2	T2	T2	T2	T2	T2	T2	T2
i	kNm	kNm	kNm	kNm	kNm	kNm	kNm	kNm	kNm	kNm	kNm	kNm	kNm	kNm	kNm	kNm
1.25:1	1.6	4.0	9.9	19	35	48*	72*	91*	113*	127*	147*	154*	**	**	**	**
1.4:1	1.7	3.9	10	20	36	51	74*	96*	122*	138*	154*	165*	190*	**	**	**
1.6:1	1.7	4.1	10	21	37	54	80*	102*	128*	144*	165*	172*	202*	**	**	**
1.8:1	1.8	4.2	11	20	37	56	84	107*	134*	151*	172*	179*	214*	**	**	**
2:1	1.8	3.6	11	21	37	58	85	107	136*	154*	176*	187*	226*	267*	**	**
2.24:1	1.7	3.7	9.7	19	36	58	86	107	141	166*	187*	194*	230*	278*	**	**
2.5:1	1.7	3.8	10	20	36	54	85	108	137	169	191*	201*	238*	288*	354*	**
2.8:1	1.7	3.9	10	20	35	56	83	106	139	166	198	211	246*	299*	360*	378*
3:1	1.6	4.1	9.6	19	34	54	80	102	131	163	193	211	246	305*	366*	385*
3.15:1	1.5	3.9	9.3	19	33	55	79	103	130	159	188	214	254	305*	372*	396*
3.35:1	1.5	3.9	9.4	18	34	53	78	100	133	155	187	216	258	310*	373*	396*
3.55:1	1.5	3.8	8.9	18	32	51	76	98	126	149	180	207	255	303*	354*	402*
3.75:1	1.4	3.6	8.9	17	31	50	74	95	120	148	180	207	253	294*	352*	403*
4:1	1.3	3.5	8.5	17	31	48	71	89	114	142	172	199	237	285*	345*	383*
4.25:1	1.3	3.4	7.4	17	29	46	67	87	111	133	155	177	217	242	276	324
4.5:1	1.3	3.3	7.4	16	28	44	65	84	110	134	156	177	217	245	280	324
4.75:1	1.2	3.1	7.5	15	27	42	63	82	103	128	153	179	216	245	280	328
5:1	1.2	3.1	7.4	15	26	41	61	78	103	123	143	172	206	243	286	333
5.3	1.1	2.9	7.0	14	25	40	58	75	98	119	142	160	193	232	284	333
5.6:1	1.1	2.8	6.6	13	24	38	54	72	92	107	135	158	187	227	274	320
6:1	1.0	2.6	6.1	12	23	36	51	67	87	106	126	149	175	204	253	300
6.3:1	1.0	2.5	5.9	10	21	34	49	64	81	99	119	141	164	199	246	281

\* Forced lubrication required

\*\* Power ratings on request

## Selection table for Helical Gear Units

i	Size	1100	1135	1180	1225	1270	1315	1355	1390	1420	1450	1475	1500	1530	1560	1600	1630
	n1	P1	P1	P1	P1	P1	P1	P1	P1	P1	P1	P1	P1	P1	P1	P1	P1
	1/min	kW	kW	kW	kW	kW	kW	kW	kW	kW	kW	kW	kW	kW	kW	kW	kW
1.25:1	1800	230	540	1350*	2600*	4400*	**	**	**	**	**	**					
	1500	200	470	1200	2250*	3900*	5300*	7900*	**	**	**	**					
	1000	135	330	820	1650	2900	3950*	5950*	7700*	9550*	10650*	12550*	12900*	**	**	**	**
1.4:1	1800	220	500	1300*	2350*	4000*	**	**	**	**	**	**					
	1500	190	430	1150	2100*	3550*	5150*	7400*	**	**	**	**	**	**	**	**	**
	1000	125	290	760	1500	2650	3850	5550*	7250*	9000*	10400*	11500*	12250*	14350*	**	**	**
1.6:1	1800	200	460	1150	2250*	3750*	5250*	**	**	**	**	**	**	**	**	**	**
	1500	170	390	1000	1950	3300*	4600*	6950*	8800*	**	**	**	**	**	**	**	**
	1000	110	265	680	1350	2400	3450	5200*	6600*	8450*	9400*	10850*	11150*	13600*	**	**	**
1.8:1	1800	185	430	1100	2000*	3500*	4850*	7350*	**	**	**	**	**	**	**	**	**
	1500	155	360	930	1700	3100*	4250*	6500*	8200*	10450*	11600*	**	**	**	**	**	**
	1000	100	240	610	1150	2150	3200	4900	6150*	7850*	9750*	9750*	10450*	12450*	**	**	**
2:1	1800	165	330	1000	1850	3250*	4650*	6850*	9800*	**	**	**	**	**	**	**	**
	1500	135	275	830	1550	2850*	4100*	6000*	7600*	9700*	10750*	12800*	**	**	**	**	**
	1000	91	185	540	1050	1900	3100	4550	5600	7300*	8100*	9400*	9750*	11650*	14000*	**	**
2.24:1	1800	145	300	810	1550	3000*	4250*	6350*	9000*	11350*	**	**	**	**	**	**	**
	1500	120	255	670	1300	2550	3750*	5550*	7000*	8950*	10300*	11800*	13550*	**	**	**	**
	1000	80	170	450	900	1650	2650	4050	4950	6500	7750*	8700*	9050*	10850*	12900*	**	**
2.5:1	1800	125	280	780	1450	2700*	3950*	5850*	8000*	10400*	11700*	**	**	**	**	**	**
	1500	105	235	650	1200	2250	3350*	5150*	6600*	8150*	9500*	10800*	12500*	13550*	**	**	**
	1000	69	155	420	820	1500	2250	3600	4500	5700	7150	8000*	8350*	10050*	11850*	14800*	**
2.8:1	1800	110	255	680	1300	2350	3650*	5400*	7200*	9750*	10700*	11200*	12900*	**	**	**	**
	1500	94	215	560	1100	1950	3150	4700*	5950*	7800*	8700*	9900*	11450*	12500*	**	**	**
	1000	62	145	370	740	1300	2050	3100	3900	5350	6200	7350	7700	9250*	11350*	13600*	14100*
3:1	1800	100	260	620	1200	2200	3450*	5200*	6550*	8200*	10200*	10700*	12350*	12850*	**	**	**
	1500	86	215	510	1000	1800	2900	4300*	5450*	6800*	8250*	9450*	10950*	11400*	14350*	**	**
	1000	57	140	340	670	1200	1900	2800	3550	4500	5700	6700	7350	8450	10650*	13000*	13400*
3.15:1	1800	89	230	550	1150	1950	3350*	4800*	6150*	7750*	9700*	10200*	11800*	12850*	**	**	**
	1500	75	195	460	970	1600	2750	4000*	5150*	6600*	7900*	9000*	10450*	11400*	**	**	**
	1000	50	125	300	640	1050	1800	2600	3400	4300	5300	6150	7000	8450	10200*	12350*	13000*
3.35:1	1800	85	220	520	1000	1900	3050*	4450*	5800*	8100*	8850*	9700*	11250*	12350*	**	**	**
	1500	71	185	430	860	1550	2550	3700*	4800*	6750*	7350*	8600*	9950*	10950*	13600*	**	**
	1000	47	120	290	560	1000	1650	2400	3150	4400	4850	5800	6650	8150	9700*	11600*	12350*
3.55:1	1800	78	200	480	940	1700	2800*	4100*	5350*	6800*	8000*	9250*	10650*	11800*	14350*	**	**
	1500	65	165	400	770	1400	2300	3450*	4400*	5650*	6600*	7950*	9050*	10450*	12600*	**	**
	1000	42	110	260	510	940	1500	2250	2900	3700	4350	5250	5950	7550	8950*	10200*	11750*
3.75:1	1800	69	180	450	900	1550	2550*	3800*	4850*	6150*	7700*	9250*	10450*	11250*	13350*	**	**
	1500	57	150	370	740	1250	2100	3150*	4000*	5100*	6350*	7850*	8900*	9950*	11700*	13300*	14750*
	1000	37	99	245	490	860	1350	2050	2650	3350	4150	5150	5850	7100	8100*	9900*	11000*
4:1	1800	63	165	410	870	1450	2250*	3450*	4300*	5500*	6950*	8400*	9650*	10700*	12850*	**	**
	1500	52	135	340	720	1200	1900	2850*	3550*	4550*	5750*	6950*	8000*	9450*	11300*	12300*	13800*
	1000	34	91	225	470	790	1200	1850	2350	3000	3750	4550	5250	6200	7450*	9150*	10300*
4.25:1	1800	59	130	320	750	1200	1950	2500	3250*	4150*	4950*	5800*	8500*	9150*	10650*	11650*	14900*
	1500	49	115	265	620	1050	1700	2200	2850	3650	4350*	5100*	5800*	7050*	7900*	10300*	13100*
	1000	32	83	175	400	720	1100	1600	2100	2750	3300	3850	4350	5300	5950	6950	8050
4.5:1	1800	54	125	300	680	1150	1750	2450	3150*	3950*	4700*	5450*	8100*	8750*	10200*	11000*	14750*
	1500	45	110	250	560	980	1500	2150	2800	3500	4150*	4800*	5550*	6750*	7550*	9750*	12950*
	1000	30	75	165	370	640	1000	1500	1950	2600	3100	3600	4150	5050	5700	6600	7650
4.75:1	1800	48	120	310	570	1050	1650	2350	3000*	3650*	4500*	5200*	7300*	8350*	9700*	10400*	13450*
	1500	40	100	255	480	870	1350	2050	2650	3200	3950*	4550*	5250*	6400*	7150*	9200*	11850*
	1000	27	67	165	320	570	910	1350	1800	2250	2800	3350	3950	4750	5400	6200	7250
5:1	1800	47	120	290	560	1000	1550	2350	2850*	3650*	4350*	4900*	6650*	7850*	9200*	10100*	13050*
	1500	39	100	240	470	850	1300	2000	2450	3200	3800*	4300*	4950*	6100*	6800*	8950*	11250*
	1000	26	66	155	300	560	860	1300	1600	2200	2550	2950	3600	4250	5000	6050	7050
5.3:1	1800	41	105	255	500	900	1450	2100	2750*	3450*	4150*	4750*	5750*	6950*	8300*	9550*	12350*
	1500	34	89	210	420	750	1200	1700	2300	2950	3550*	4200*	4650*	5750*	6450*	8450*	10250*
	1000	23	58	140	275	490	800	1100	1500	1950	2350	2750	3100	3800	4500	5650	6650
5.6:1	1800	38	97	225	440	790	1300	1900	2500*	3150*	3700*	4650*	5600*	6650*	8050*	9200*	11150*
	1500	31	80	185	370	660	1050	1550	2050	2600	3050*	3950*	4650*	5500*	6450*	7950*	9250*
	1000	21	53	120	245	440	700	1000	1350	1700	2000	2600	3050	3600	4350	5200	6050
6:1	1800	33	85	190	360	800	1150	1650	2100*	2700*	3400*	4050*	4900*	5750*	6450*	8200*	9850*
	1500	28	70	160	300	660	960	1350	1750	2250	2800*	3350*	4050*	4750*	5300*	6800*	8150*
	1000	18	46	105	200	430	630	890	1150	1500	1850	2200	2650	3100	3500	4450	5300
6.3:1	1800	30	74	175	310	630	1050	1500	1900*	2400*	3000*	3600*	4300*	5050*	6200*	7600*	8600*
	1500	25	62	145	260	520	870	1200	1600	2000	2450*	3000*	3550*	4150*	5150*	6300*	7100*
	1000	17	40	96	170	340	570	810	1050	1300	1600	1950	2300	2700	3350	4100	4650

\* Forced lubrication required

\*\* Power ratings on request

### Thermal Power Ratings LX 1000

Size		1100	1135	1180	1225	1270	1315	1355	1390	1420	1450	1475	1500
		Pt	Pt	Pt	Pt	Pt	Pt	Pt	Pt	Pt	Pt	Pt	Pt
i	n1 1/min	kW	kW	kW	kW	kW	kW	kW	kW	kW	kW	kW	kW
Without extra cooling (ambient temperature +20 °C)													
1.25-1.8	1800	62	125										
	1500	58	125	180	225								
	1000	53	115	175	240								
2.0-3.75	1800	51	105	160	200								
	1500	47	100	155	210	300	390						
	1000	43	96	145	200	300	400	490					
4.0-6.3	1800	40	86	130	185	260	320	400	460				
	1500	38	81	120	180	255	320	410	490	570	660		
	1000	34	74	110	165	240	310	400	470	550	640	710	780
With fan cooler (ambient temperature +20 °C)													
1.25-1.8	1800	150	330	470	550								
	1500	125	275	400	520	660							
	1000	94	205	310	420	580	760						
2.0-3.75	1800	125	275	410	520	730	930	1000					
	1500	100	225	330	440	640	840	1000	1150	1300			
	1000	77	170	255	340	510	690	830	980	1100	1250	1450	
4.0-6.3	1800	100	215	320	460	630	810	1000	1150	1300	1500	1650	1800
	1500	80	170	265	380	520	670	850	1000	1150	1300	1450	1550
	1000	60	130	200	290	400	520	660	790	910	1050	1150	1250
With water cooler coil (ambient temperature +20 °C)													
1.25-1.8	1800	215	370	520	950	1200	1650	1850	1800	1950	2200	2300	2400
	1500	200	350	510	950	1300	1850	2200	2450	2800	3150	3350	3550
	1000	180	320	470	890	1250	1800	2200	2600	3000	3400	3650	3850
2.0-3.75	1800	175	310	440	810	1150	1650	2050	2150	2450	2900	3150	3350
	1500	165	290	420	770	1150	1650	2050	2200	2550	3000	3300	3550
	1000	145	265	380	710	1050	1550	1950	2100	2450	2900	3150	3450
4.0-6.3	1800	135	240	340	690	960	1300	1700	1850	2150	2550	2700	2850
	1500	130	220	320	650	910	1250	1650	1750	2100	2500	2600	2750
	1000	115	200	295	590	830	1150	1500	1650	1900	2300	2400	2550

### Average Weights of Gear Units (kg)

Size	Weights
100	130
135	150
180	340
225	540
270	880
315	1230
355	1680
390	2350
420	2570
450	3100
475	3520
500	4440
530	4580
560	5200
600	6700
630	7820

### Approximate Quantities of Oil (litres)

Size	Quantity
100	5
135	9
180	17
225	31
270	54
315	76
355	95
390	119
420	151
450	187
475	229
500	275
530	310
560	350
600	410
630	488

### Exact Ratios for LX 1000

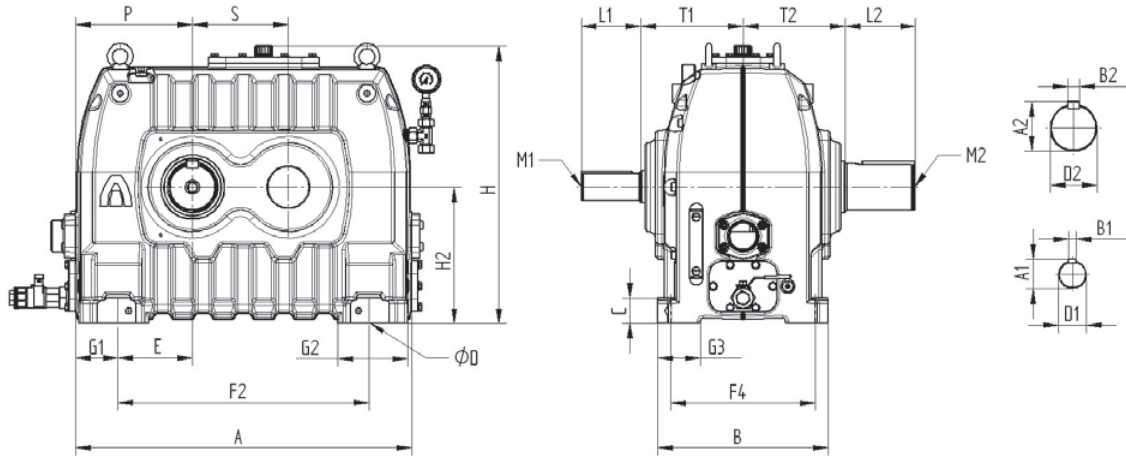
Size	Ratio i										
	1.25:1	1.4:1	1.6:1	1.8:1	2:1	2.24:1	2.5:1	2.8:1	3:1	3.15:1	3.35:1
1100	1,2286	1,3939	1,6000	1,7857	2,0000	2,2500	2,5000	2,7826	2,9545	3,2174	3,4091
1135	1,2250	1,3784	1,5882	1,7813	2,0000	2,2222	2,4800	2,7826	3,0000	3,1429	3,3636
1180	1,2571	1,3939	1,6000	1,7857	2,0000	2,2222	2,5200	2,8261	2,9545	3,1667	3,3478
1225	1,2222	1,4242	1,5806	1,8214	2,0385	2,2222	2,4800	2,7826	2,9545	3,1429	3,3500
1270	1,2353	1,4194	1,5862	1,7778	2,0000	2,2609	2,4783	2,7826	2,9545	3,1304	3,3636
1315	1,2667	1,3793	1,6154	1,8148	1,9615	2,2083	2,5000	2,8261	2,9545	3,1304	3,3182
1355	1,2581	1,3793	1,5926	1,7857	1,9615	2,2083	2,4800	2,7826	2,9545	3,1429	3,3478
1390	1,2353	1,3750	1,6207	1,8148	2,0000	2,2609	2,5000	2,8182	3,0000	3,1304	3,3182
1420	1,2424	1,4194	1,5862	1,7778	1,9600	2,2609	2,5238	2,7273	3,0500	3,1500	3,3333
1450	1,2500	1,3871	1,6071	1,8077	2,0000	2,2400	2,4783	2,8095	3,0000	3,1429	3,3500
1475	1,2286	1,4063	1,6000	1,8519	1,9615	2,2500	2,5000	2,8182	3,0000	3,2000	3,3810
1500	1,2500	1,4118	1,6129	1,7931	2,0000	2,2400	2,5217	2,8696	3,0000	3,1905	3,4000
1530	1,2308	1,3889	1,5588	1,8065	2,0345	2,2222	2,4800	2,7826	3,0476	3,1429	3,3182
1560	1,2571	1,3939	1,6000	1,7857	2,0000	2,2500	2,5455	2,7619	3,0000	3,1364	3,3333
1600	1,2703	1,4000	1,6250	1,8000	2,0000	2,2308	2,5000	2,7727	2,9524	3,1500	3,3684
1630	1,2286	1,4063	1,5667	1,7857	1,9615	2,2083	2,4545	2,8000	3,0000	3,1905	3,3500

### Exact Ratios for LX 1000

Size	Ratio i										
	3.55:1	3.75:1	4:1	4.25:1	4.5:1	4.75:1	5:1	5.3:1	5.6:1	6:1	6.3:1
1100	3,6190	3,8000	4,0526	4,2857	4,5500	4,8421	4,8947	5,2222	5,5500	5,8947	6,2222
1135	3,5714	3,7500	4,0000	4,3000	4,5263	4,8333	4,9000	5,2105	5,5000	5,9474	6,3333
1180	3,5455	3,7619	3,9583	4,3182	4,5714	4,6667	4,9000	5,2105	5,5556	6,1111	6,4211
1225	3,6190	3,7143	3,8261	4,2381	4,4500	4,6818	5,0000	5,3000	5,4348	6,0000	6,3000
1270	3,5238	3,7727	4,0000	4,2500	4,5263	4,8333	4,9000	5,2857	5,5500	5,6000	6,2778
1315	3,5238	3,7500	4,0000	4,2000	4,6000	4,8421	4,9474	5,2000	5,5263	5,9000	6,2105
1355	3,5000	3,7143	3,9500	4,3000	4,5238	4,7500	4,8500	5,3000	5,4444	6,0000	6,3158
1390	3,5238	3,7500	3,9474	4,2778	4,5000	4,7368	5,0000	5,2105	5,5000	6,0556	6,3158
1420	3,5500	3,7368	4,0000	4,2000	4,4211	4,8000	4,9000	5,2105	5,5556	6,0000	6,4118
1450	3,5789	3,7143	3,9500	4,2381	4,5000	4,7895	5,0476	5,3000	5,5263	5,9444	6,3529
1475	3,6000	3,6500	3,9524	4,2000	4,5238	4,8000	5,0526	5,3333	5,4444	6,0000	6,3333
1500	3,6316	3,7143	3,9500	4,2381	4,4500	4,7368	5,0000	5,3684	5,4211	5,8333	6,3158
1530	3,5238	3,7273	4,0000	4,2727	4,4762	4,7500	5,0526	5,3333	5,4444	5,8947	6,2778
1560	3,5500	3,7895	4,0000	4,2632	4,5000	4,7368	5,0556	5,3684	5,4211	6,1176	6,1765
1600	3,6190	3,7143	3,9500	4,1579	4,4444	4,7059	4,9444	5,2353	5,5000	5,9412	6,2222
1630	3,5789	3,8333	3,8889	4,2000	4,4211	4,7222	4,9474	5,2222	5,5263	5,8889	6,2941



As a result of extensive FEM calculations, a high rigidity of the housing has been achieved. The geometry of the teeth has been designed with consideration to deformations caused by loading. High manufacturing accuracy has secured a superior quality of gears. These features both result in extremely low noise and vibration levels in the LX-gearbox.



### Helical Gear Unit LX 1000

Size	Dimensions															
	A	B	C	D	E	F2	F4	G1	G2	G3	H	H2	P	S	T1	T2
100	370	300	30	15	85	270	265	50	70	70	370	160	135	100	135	135
135	470	330	45	19	110	360	290	55	80	80	440	200	165	135	170	170
180	640	370	50	24	130	450	320	95	150	90	550	250	225	180	210	210
225	790	400	60	28	175	590	340	100	160	100	670	320	275	225	240	240
270	960	450	60	28	225	760	390	100	160	100	775	375	325	270	275	275
315	1060	500	60	28	260	850	440	105	165	100	890	450	365	315	310	310
355	1160	530	70	35	290	930	460	115	180	120	980	500	405	355	330	330
390	1280	580	80	42	330	1050	490	115	205	130	1050	530	445	390	350	350
420	1370	610	80	42	355	1130	520	120	205	130	1110	560	475	420	370	370
450	1460	630	90	48	380	1210	540	125	210	140	1180	600	505	450	385	385
475	1530	670	90	48	400	1280	580	125	210	140	1230	630	525	475	400	400
500	1590	700	90	48			610	125	240	150	1280	660	545	500	420	420
530	1680	730	90	48			640	130	240	150	1340	690	575	530	445	445
560	1770	770	90	48			680	135	260	165	1390	710	605	560	470	470
600	1910	830	90	48			740	150	260	165	1480	750	655	600	500	500
630	2000	870	90	48			780	165	260	165	1550	790	695	630	520	520

### Helical Gear Unit LX 1000

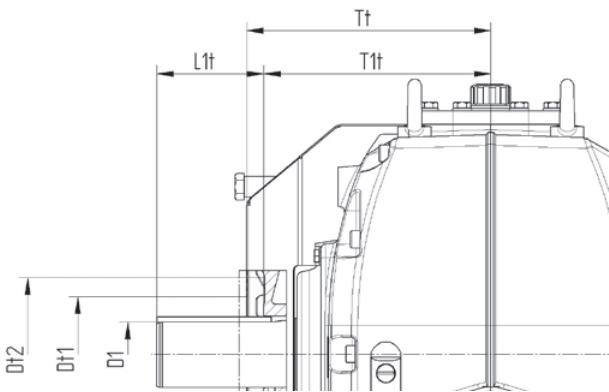
Size	Output shaft					Input shaft														
						i = 1,25 - 4,00					i = 4,25 - 5,6					i = 6,00 - 6,30				
	D2	L2	A2	B2	M2	D1	L1	A1	B1	M1	D1	L1	A1	B1	M1	D1	L1	A1	B1	M1
100	48k6	82	51,5	14	M16x36	38k6	80	41	10	M12x28	28k6	62	31	8	M10x22	22k6	56	25,5	6	M8x19
135	65m6	105	69	18	M20x42	50k6	110	53,5	14	M16x36	35k6	80	38	10	M12x28	32k6	80	37	10	M12x28
Size	Output shaft					Input shaft														
						i = 1,25 - 4,00					i = 4,25 - 6,30									
	D2	L2	A2	B2	M2	D1	L1	A1	B1	M1	D1	L1	A1	B1	M1	D1	L1	A1	B1	M1
180	95m6	130	100	25	M24x50	70m6	140	74,5	20	M20x42	45k6	110	48,5	14	M16x36					
225	110m6	165	116	28	M24x50	90m6	170	95	25	M24x50	65m6	140	69	18	M20x42					
270	140m6	200	148	36	M30x60	100m6	210	106	28	M24x50	75m6	140	79,5	20	M20x42					
315	160m6	240	169	40	M30x60	120m6	210	127	32	M24x50	85m6	175	90	22	M20x42					
355	180m6	240	190	45	M30x60	140m6	250	148	36	M30x60	100m6	210	106	28	M24x50					
390	190m6	280	200	45	M30x60*	160m6	300	169	40	M30x60	110m6	225	116	28	M24x50					
420	210m6	280	221	50	M30x60*	170m6	300	179	40	M30x60	120m6	225	127	32	M24x50					
450	230m6	280	241	50	M36x71*	180m6	300	190	45	M30x60	130m6	260	137	32	M24x50					
475	230m6	330	241	50	M36x71*	190m6	350	200	45	M30x60*	140m6	260	148	36	M30x60					
500	250m6	330	262	56	M36x71*	190m6	350	200	45	M30x60*	150m6	260	158	36	M30x60					
530	250m6	330	262	56	M36x71*	210m6	350	221	50	M30x60*	160m6	300	169	40	M30x60					
560	270m6	330	282	63	M36x71*	220m6	350	231	50	M30x60*	170m6	300	179	40	M30x60					
600	290m6	380	302	63	M36x71*	240m6	410	252	56	M36x71*	180m6	300	190	45	M30x60					
630	300m6	380	314	70	M36x71*	240m6	410	252	56	M36x71*	180m6	300	190	45	M30x60					

\* Dimensions not acc. to DIN 332

## Fan LX 1000

Size	Input shaft				Input shaft														
					i = 1,25 - 4,00					i = 4,25 - 5,6					i = 6,00 - 6,30				
	T1t	Tt	Dt1	Dt2	D1	L1t	A1	B1	M1	D1	L1t	A1	B1	M1	D1	L1t	A1	B1	M1
100	155	166	60	90	38k6	60	41	10	M12x28	28k6	42	31	8	M10x22	22k6	36	25,5	6	M8x19
135	192	206	80	110	50k6	88	53,5	14	M16x36	35k6	58	38	10	M12x28	32k6	58	37	10	M12x28
Size	Input shaft				Input shaft														
					i = 1,25 - 4,00					i = 4,25 - 6,30									
	T1t	Tt	Dt1	Dt2	D1	L1t	A1	B1	M1	D1	L1t	A1	B1	M1					
180	238	256	120	160	70m6	112	74,5	20	M20x42	45k6	82	48,5	14	M16x36					
225	275	294	170	200	90m6	135	95	25	M24x50	65m6	105	69	18	M20x42					
270	310	329	190	220	100m6	175	106	28	M24x50	75m6	105	79,5	20	M20x42					
315	355	373	220	270	120m6	165	127	32	M24x50	85m6	130	90	22	M20x42					
355	375	393	250	310	140m6	205	148	36	M30x60	100m6	165	106	28	M24x50					
390	410	443	280	360	160m6	240	169	40	M30x60	110m6	165	116	28	M24x50					
420	430	463	300	380	170m6	240	179	40	M30x60	120m6	165	127	32	M24x50					
450	445	478	330	400	180m6	240	190	45	M30x60	130m6	200	137	32	M24x50					
475	460	493	350	420	190m6	290	200	45	M30x60*	140m6	200	148	36	M30x60					
500	480	513	380	420	190m6	290	200	45	M30x60*	150m6	200	158	36	M30x60					

\* Dimensions not acc. to DIN 332



The new housing design allows cool air to flow underneath the housing. The non-friction labyrinth seals and the internal oil tray for oil splashing control minimize power loss. The fan with the air-deflecting cover effectively cools the gearbox from all sides. With these features a high thermal capacity of the LX-gearbox is guaranteed.



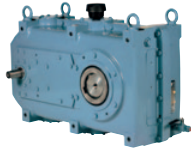
**POWER-PLAZA.COM**

Kumera Power-Plaza is the online market place for Kumera mechanical transmission products and associated spare parts. Power-plaza.com speeds up the process of requesting for quotations. [www.power-plaza.com](http://www.power-plaza.com)

## Other Kumera Drive Units



HELICAL GEAR UNITS,  
COMPACT F-RANGE



HELICAL GEAR UNITS,  
COMPACT G-RANGE



ONE STAGE HELICAL  
GEAR UNITS  
KUMERA LX-RANGE



HEAVY DUTY HELICAL  
GEAR UNITS,  
CUMERA D-RANGE



BEVEL GEAR UNITS,  
COMPACT F-RANGE



BEVEL GEAR UNITS,  
COMPACT G-RANGE



AGITATOR GEAR UNITS,  
SG-RANGE



HEAVY DUTY AGITATOR  
GEAR UNITS,  
E-RANGE



WORM GEAR UNITS,  
COVERA RANGE



COMBINATION HELICAL AND  
WORM GEAR UNITS,  
COVERA RANGE



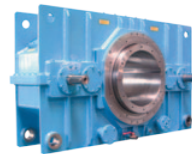
DOUBLE WORM GEAR UNITS,  
COVERA RANGE



WIND UP AND UNWIND  
GEAR UNITS,  
LP-RANGE



ONE STAGE HELICAL  
GEAR UNITS,  
CUMERA LH-RANGE



YANKEE CYLINDER  
GEAR UNITS



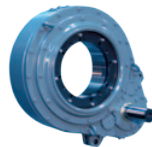
SPECIAL GEAR UNITS



BEVEL GEAR UNITS,  
KA-RANGE



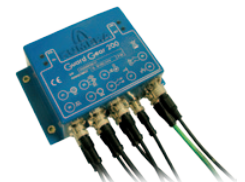
FRONT END GEAR UNITS,  
NORGEAR-RANGE



INTEGRATED ROLL  
GEAR UNITS,  
TP-RANGE



PLANETARY  
GEAR UNITS,  
P-RANGE



CONDITION MONITORING  
GUARD GEAR 200

### KUMERA POWER TRANSMISSION GROUP

#### KUMERA DRIVES OY

Kumerankatu 2  
FI-11100 Riihimäki  
FINLAND  
Tel. +358 20 755 4200  
Fax: +358 20 755 4220  
E-mail: [drives@kumera.com](mailto:drives@kumera.com)

#### KUMERA AS

P.O. Box 2043  
N-3202 Sandefjord  
NORWAY  
Tel. +47 33 48 54 54  
Fax: +47 33 48 54 55  
E-mail: [sales@kumera.no](mailto:sales@kumera.no)

#### KUMERA ANTRIEBSTECHNIK GMBH

Raiffeisenstrasse 38-40  
A-8010 Graz  
AUSTRIA  
Tel. +43 316 471 524-0  
Fax: +43 316 462 550  
E-mail: [kumera.graz@kumera.com](mailto:kumera.graz@kumera.com)



#### KUMERA (CHINA) CO, LTD.

168 Meifeng Road  
Kunshan 215300, Jiangsu  
CHINA  
Tel. +86 512 503 61701  
Fax: +86 512 503 61710  
E-mail: [kumerachina@kumera.com](mailto:kumerachina@kumera.com)